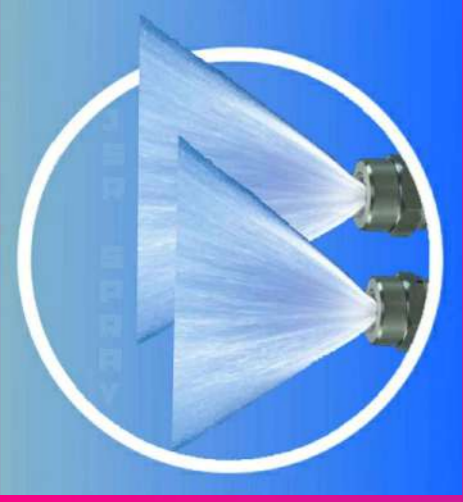


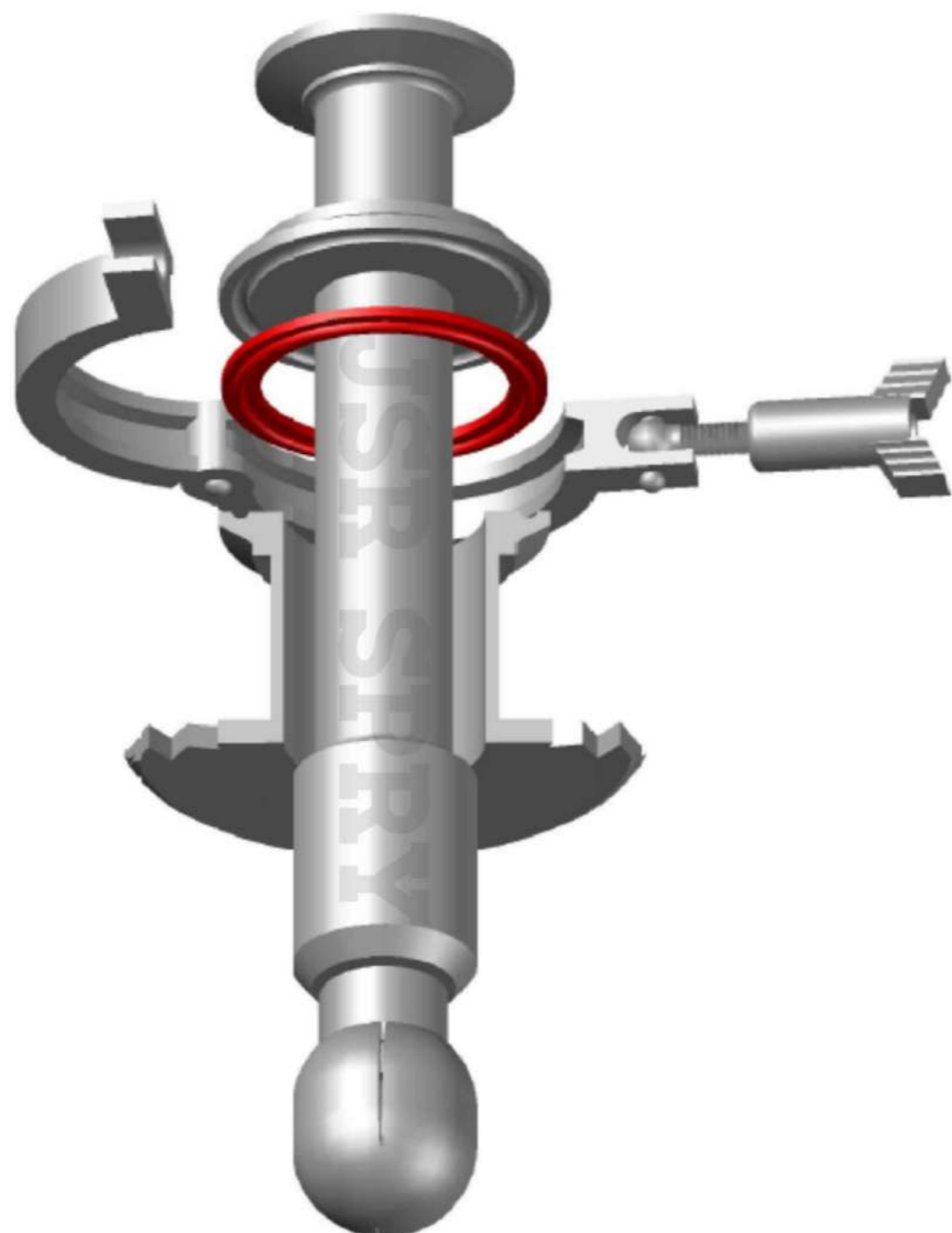
JSR SPRAY SYSTEMS (INDIA)



TANK RINSING NOZZLES

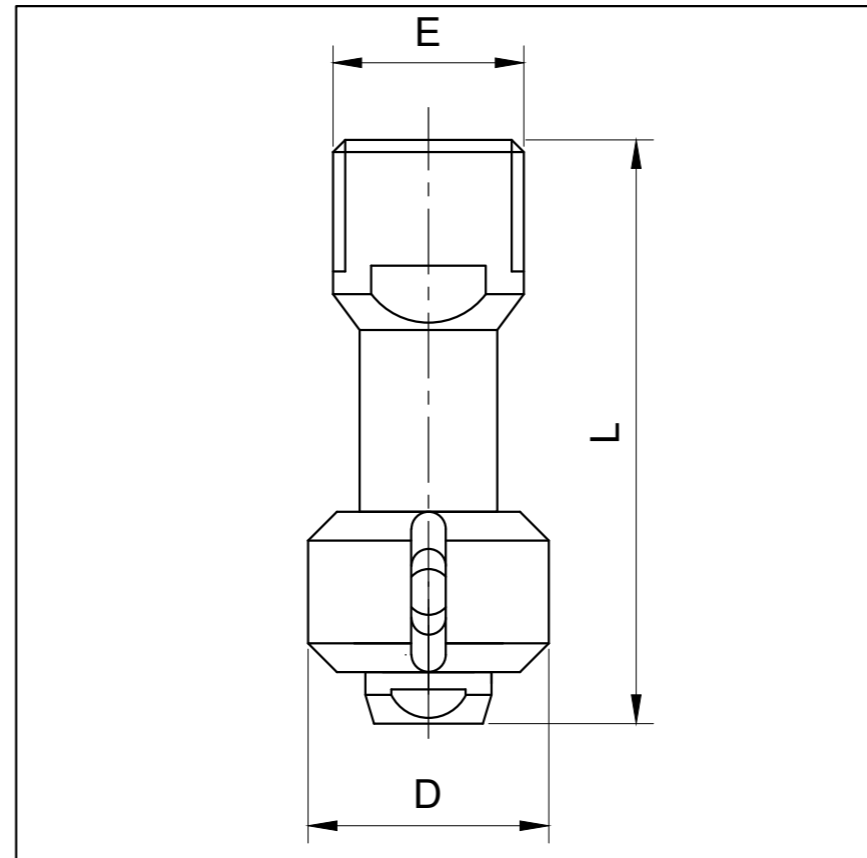
APPLICATIONS

-  Food and Beverage Industries
-  Pharmaceuticals Industries
-  Cement plant
-  Ointment Plant
-  Bio Engineering
- And More ..



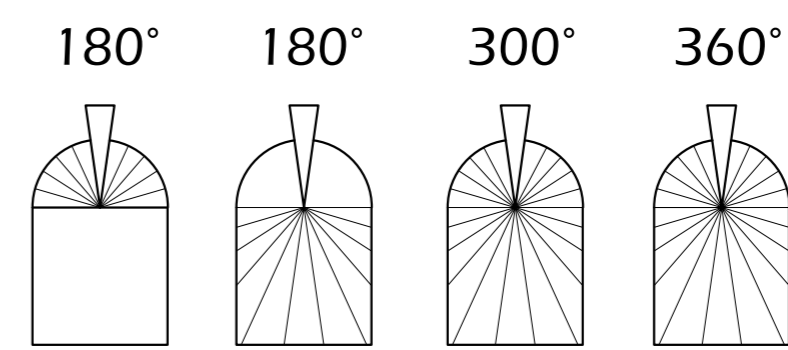
JSR SELF SPINNING SPRAY BALL - SERIES K01

- Material :
Stainless steel AISI 316L
- Bearing : Peek slide Bearing .
- Excellent power of Cleaning.
- Insert in small Opening.
- Self Lubricating .
- Special Design for Slip-on & Tri-Clamp



Max Spray Dia : 600 mm
operating Pressure : 2 Bar
Max Temp. : 140°C
Coverage : 360° & Partial

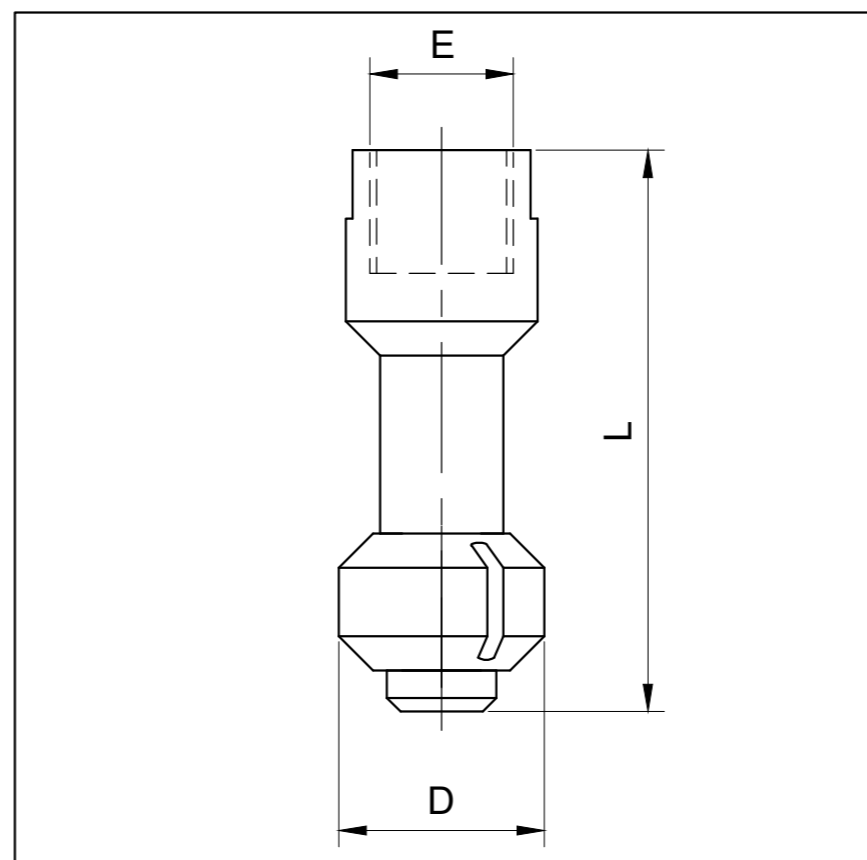
Spray Angle



SR	MODEL NUMBER	END CONNECTION	FLOW RATE			DIMENSIONS	
			@ BAR			DIA	LENGTH
		E	1	2	3	D	L
1	JSR-K01.016.24.3A.AB	1/8"BSP(F)	12	16	19	18	51
2	JSR-K01.018.24.3A.AC	1/4"BSP(M)	14	18	21	18	51
3	JSR-K01.021.24.3A.AE	3/8"BSP(M)	16	21	25	21	51

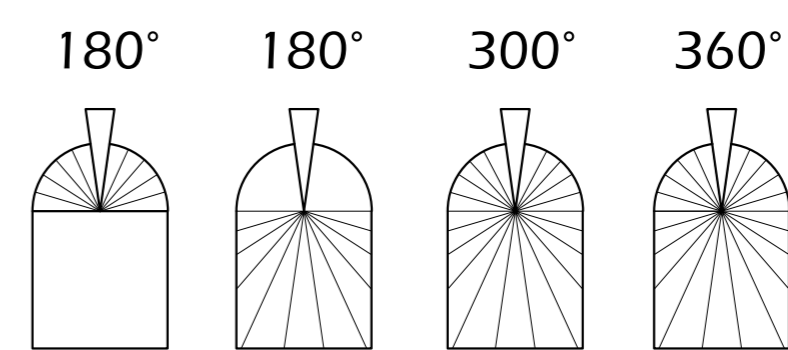
JSR SELF SPINNING SPRAY BALL - SERIES K06

- Material : PTFE
- Bearing : PTFE Slide Bearing
- Good Corrosion Resistance
- light Weight
- Balance Rotating moment of action.
- Operation every Position.
- Special Design with slip-on & Tri-Clamp.



Max Spray Dia : 600 mm
operating Pressure : 2 Bar
Max Temp. : 100°C
Coverage : 360° & Partial

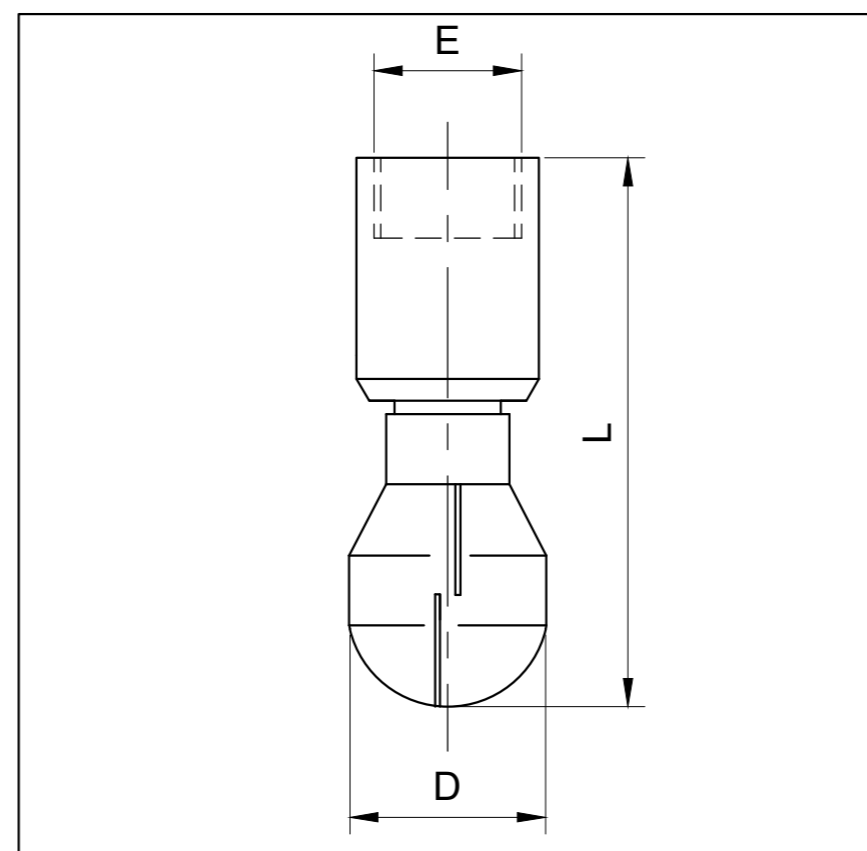
Spray Angle



SR	MODEL NUMBER	END CONNECTION	FLOW RATE			DIMENSIONS	
			@ BAR			DIA	LENGTH
		E	1	2	3	D	L
1	JSR-K06.030.24.3S.AH	1/2"BSP(F)	23	30	35	30	80

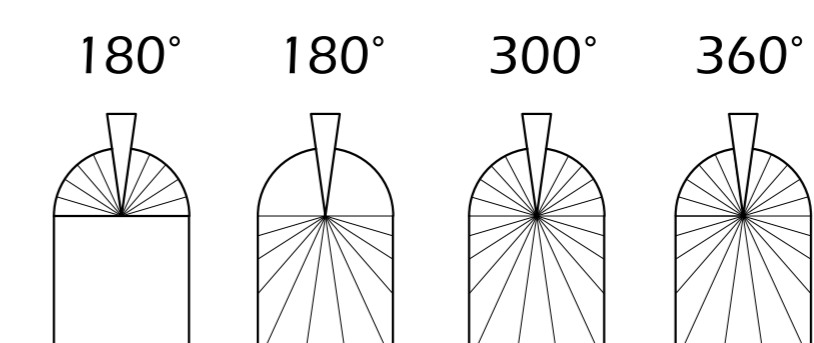
JSR SELF SPINNING SPRAY BALL - SERIES K19

- Two Size Group (Micro & Mini)
- High Flow slot Orifices produce big sprays from a small head .
- Material :
Corrosion Resistance stainless steel AISI 316L.
- Bearing : Double Bearing made of stainless steel AISI 316L.
- Special Design with slip on & Tri-Clamp.



Max Spray Dia : 900 mm
operating Pressure : 2 Bar
Max Temp. : 140°C
Coverage : 360° & Partial

Spray Angle

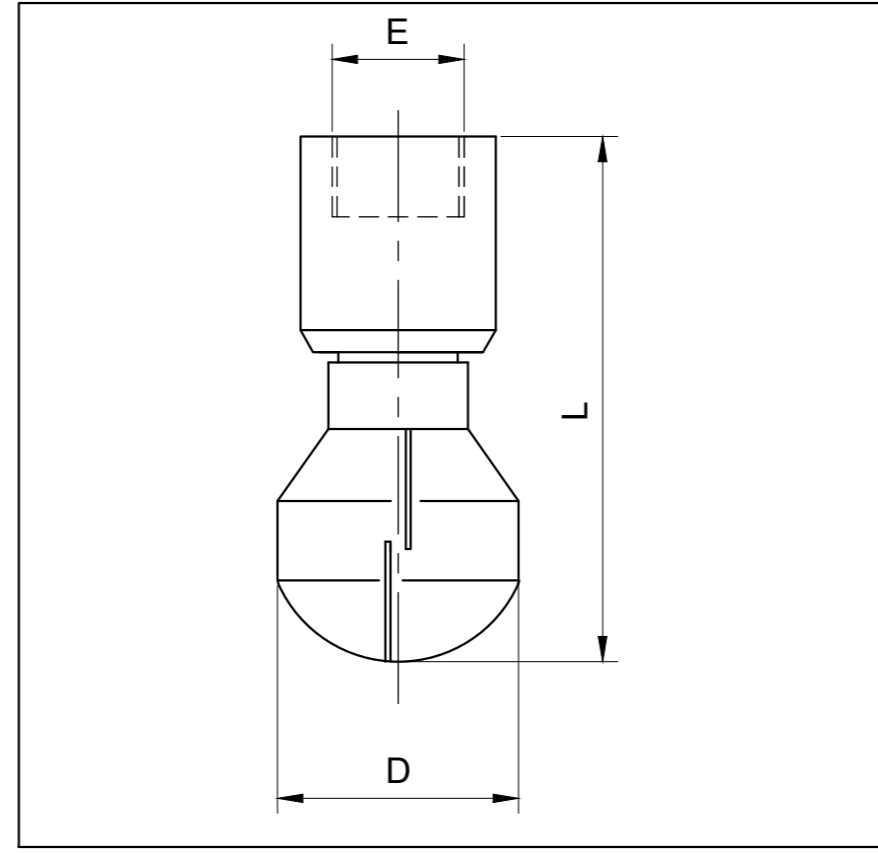


SR	MODEL NUMBER	END CONNECTION	FLOW RATE			DIMENSIONS	
			@ BAR			DIA	LENGTH
		E	1	2	3	D	L
1	JSR-K19.021.24.3A.AB	3/8"BSP(F)	16	21	25	28	78
2	JSR-K19.035.24.3A.AH	1/2"BSP(F)	27	35	41	28	78



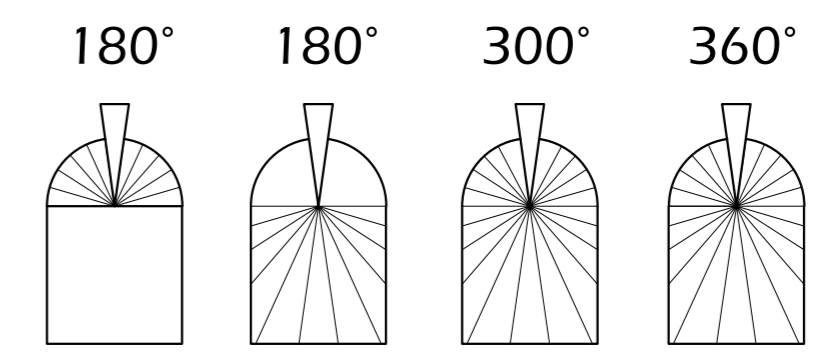
JSR SELF SPINNING SPRAY BALL - SERIES K26

- Two Size Groups (Micro & Mini)
- High Flow slot orifices produce big sprays from a small head
- Head balance for minimum vibration.
- Free spinning Self Lubricating and self Flushing .
- Material : Corrosion Resistant stainless steel AISI 316 L
- Bearing : Double Bearing made of stainless steel AISI 316 L



Max Spray Dia : 1.5m
 operating Pressure : 2 Bar
 Max Temp. : 140°C
 Coverage : 360° & Partial

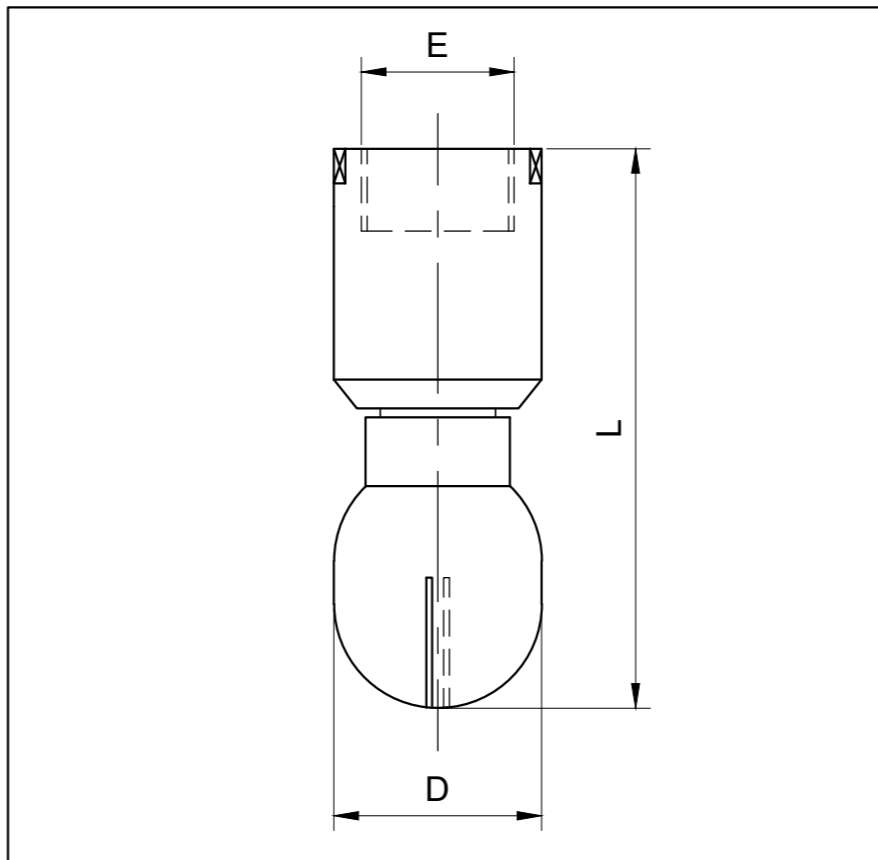
Spray Angle



SR	MODEL NUMBER	END CONNECTION	FLOW RATE			DIMENSIONS	
			@ BAR			DIA	LENGTH
		E	1	2	3	D	L
1	JSR-K26.045.24.3A.AH	1/2" BSP(F)	34	45	53	30	82
2	JSR-K26.045.24.3A.TF10	SLIP ON 1"	34	45	53	30	100

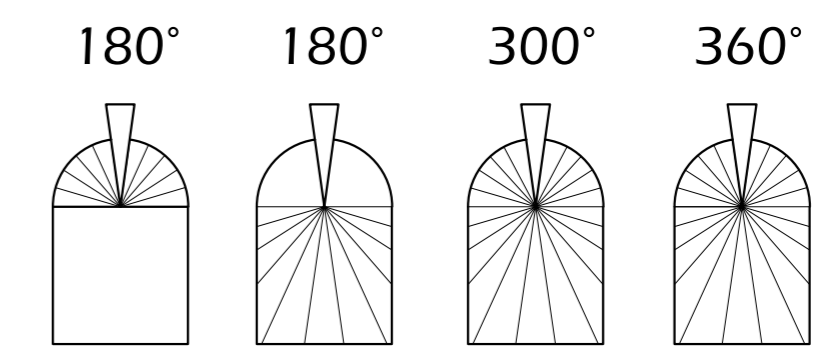
JSR SELF SPINNING SPRAY BALL - SERIES KM9

- Two Size Groups (Micro & Mini)
- High Flow slot orifices produce big sprays from a small head
- Head balance for minimum vibration.
- Free spinning Self Lubricating and self Flushing .
- Material : Corrosion Resistant stainless steel AISI 316 L
- Bearing : Double Bearing made of stainless steel AISI 316 L



Max Spray Dia : 1.8m
 operating Pressure : 2 Bar
 Max Temp. : 140°C
 Coverage : 360° & Partial

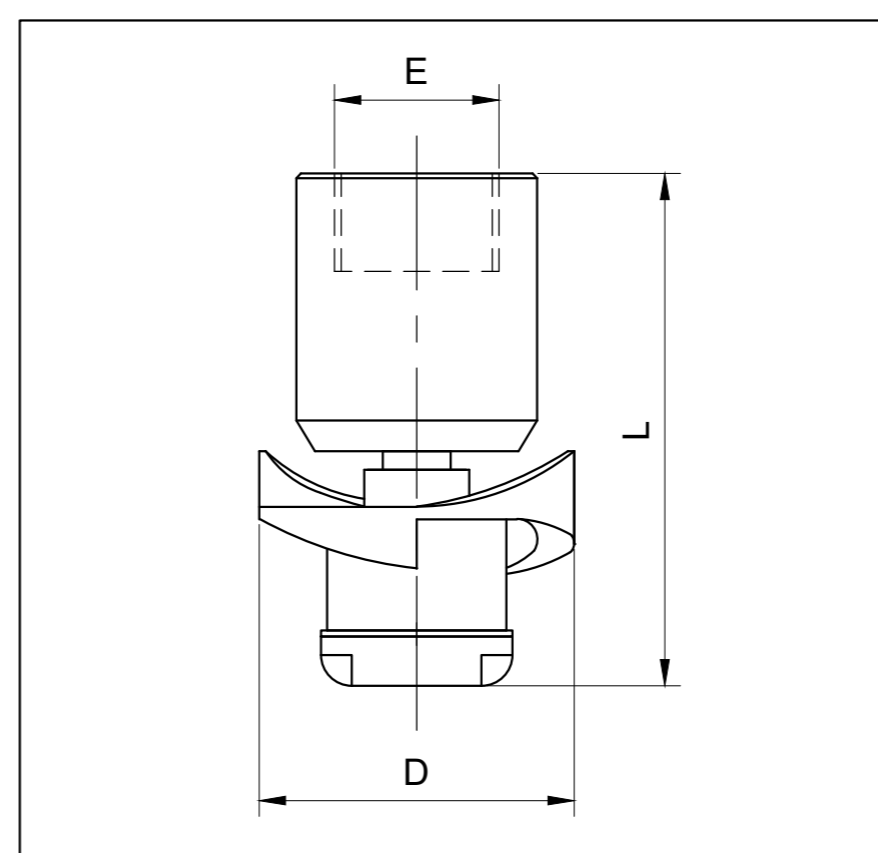
Spray Angle



SR	MODEL NUMBER	END CONNECTION	FLOW RATE			DIMENSIONS	
			@ BAR			DIA	LENGTH
		E	1	2	3	D	L
1	JSR-KM9.049.24.3A.AL	3/4" BSP(F)	37	49	58	36	97
2	JSR-KM9.069.24.3A.AL	3/4" BSP(F)	52	69	81	36	97

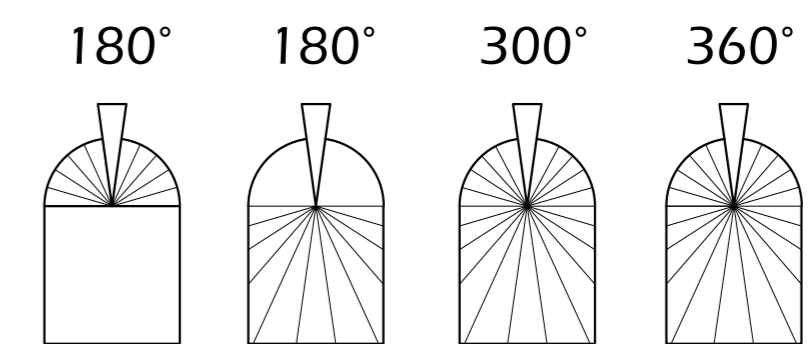
JSR IMPELLER JET SPRAY BALL - SERIES K67

- Material ; Corrosion Resistant Stainless steel AISI 316L
- Bearing PTFE Sliding Bearing .
- Wash fluids entering the TURBODISC is directed onto The precision shaped disc. Hydraulic bearing allow the disc to rotate friction free at high speed and the wash fluid is distributed in a dense spray.



Max Spray Dia : 2.6 - 3 meters
 operating Pressure : 2 Bar
 Max Temp. : 140°C
 Coverage : 360° & Partial

Spray Angle

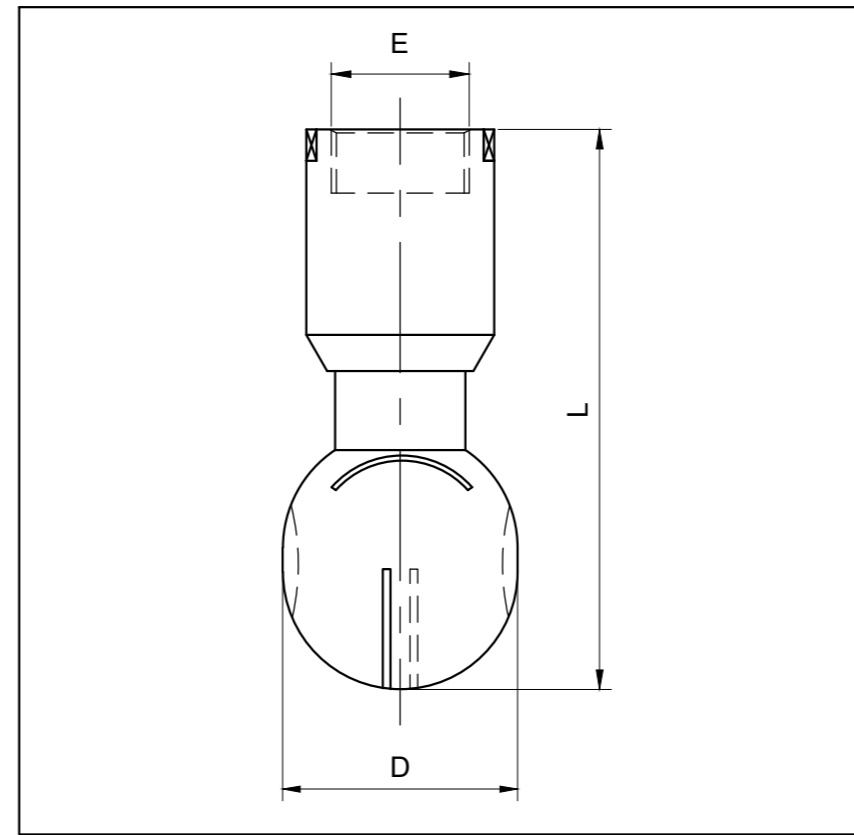


SR	MODEL NUMBER	END CONNECTION	FLOW RATE			DIMENSIONS	
			@ BAR			DIA	LENGTH
		E	1	2	3	D	L
1	JSR - K67.050.24.3A.AL	3/4" BSP(F)	45	50	55	51	83
2	JSR - K67.100.24.3A.AN	1" BSP(F)	76	100	118	51	83



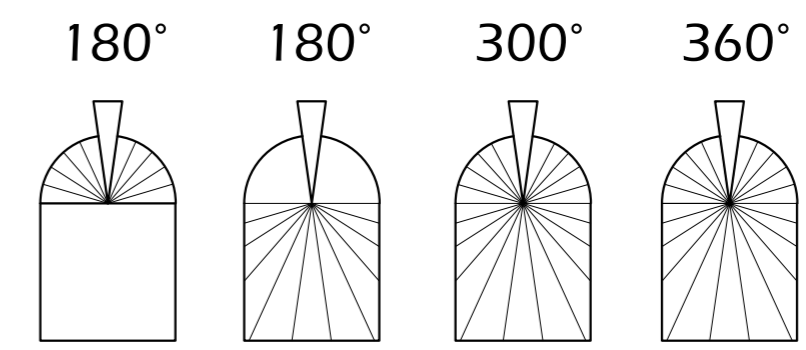
JSR SELF SPINNING SPRAY BALL - SERIES KM9

- High flow slot Orifices produce big spray from a small head.
- Head balance for minimum vibration
- Free spinning, self Lubricating and self Flushing .
- Material :



Max Spray Dia : 2.1 Meters
 operating Pressure : 2 Bar
 Max Temp. : 140°C
 Coverage : 360° & Partial

Spray Angle



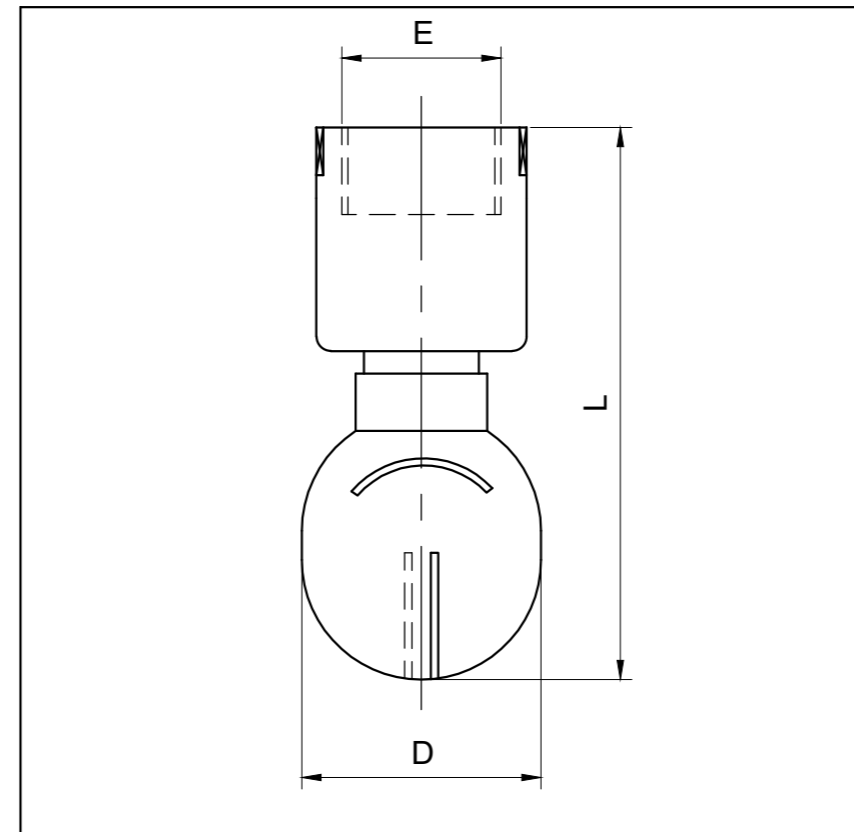
Corrosion Resistant
 Stainless Steel AISI
 316L

- Bearing : Double bearing made of Stainless Steel AISI 316L

SR	MODEL NUMBER	END CONNECTION	FLOW RATE			DIMENSIONS	
			@ BAR			DIA	LENGTH
		E	1	2	3	D	L
1	JSR-KM9.089.24.3A.AL	3/4" BSP(F)	67	89	58	45	107
2	JSR-KM9.089.24.3A.AN	1" BSP(F)	67	89	58	45	116

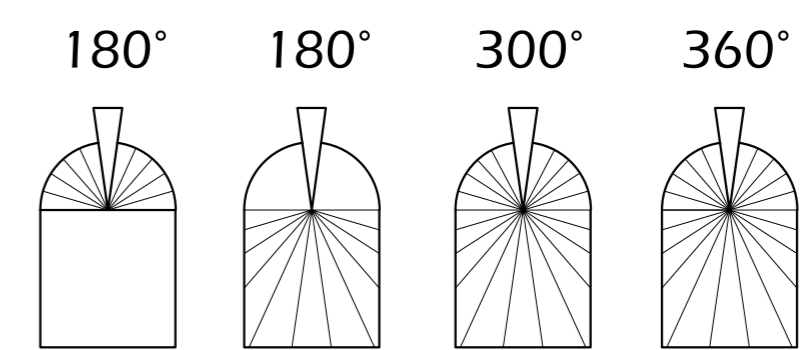
JSR SELF SPINNING SPRAY BALL - SERIES KM8

- High flow slot Orifices produce big spray from a small head.
- Head balance for minimum vibration
- Free spinning, self Lubricating and self Flushing .
- Material :



Max Spray Dia : 2.5 - 3 Meters
 operating Pressure : 2 Bar
 Max Temp. : 140°C
 Coverage : 360° & Partial

Spray Angle



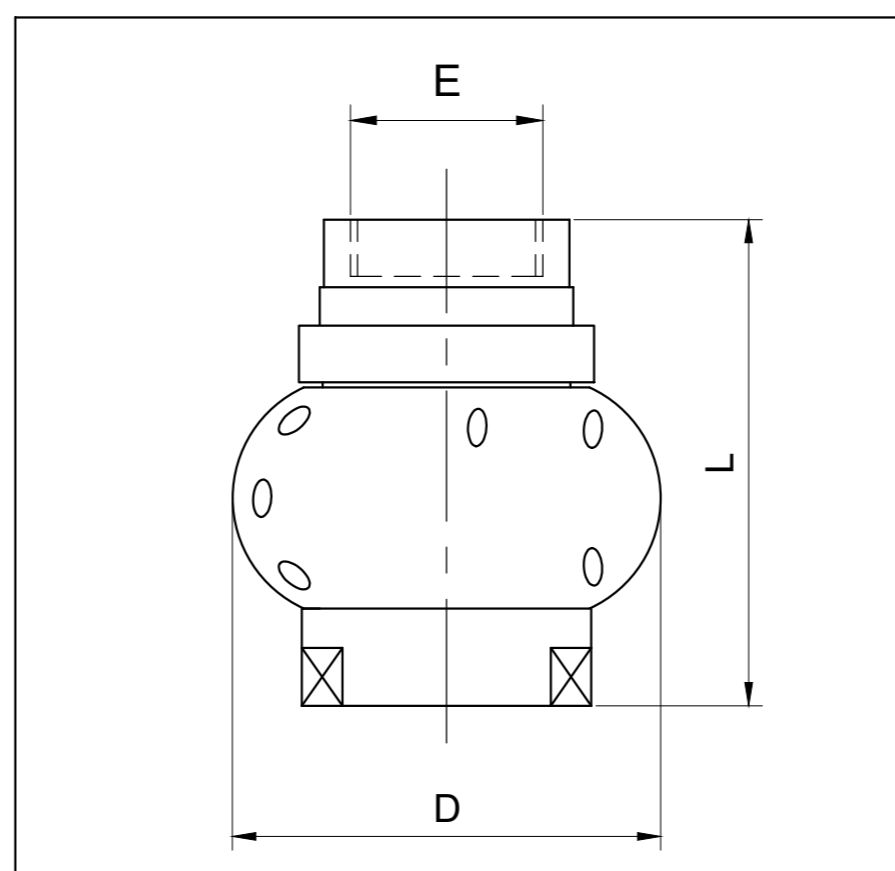
Corrosion Resistant
 Stainless Steel AISI
 316L

- Bearing : Double bearing made of Stainless Steel AISI 316L

SR	MODEL NUMBER	END CONNECTION	FLOW RATE			DIMENSIONS	
			@ BAR			DIA	LENGTH
		E	1	2	3	D	L
1	JSR-KM8.130.24.3A.AN	1" BSP(F)	99	130	153	50	115
2	JSR-KM8.160.24.3A.AN	1" BSP(F)	121	160	188	50	115
3	JSR-KM8.190.24.3A.AN	1" BSP(F)	145	190	223	54	130

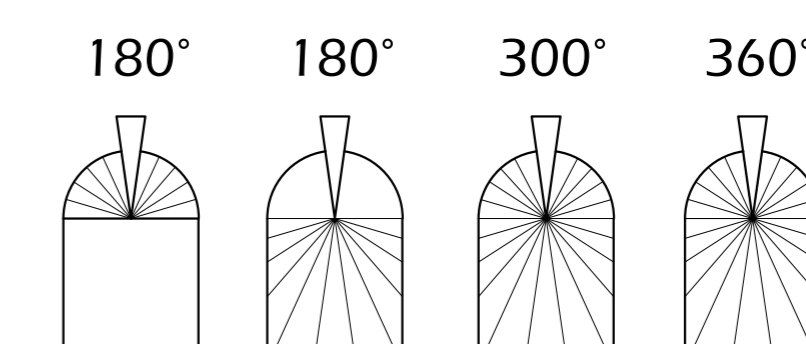
JSR SELF SPINNING SPRAY BALL - SERIES K84, PTFE VERSION

- Material : PTFE .
- Bearing : PTFE .
Slide Bearing .
- Corrosion Resistant.
- Light Weight.
- Balanced Rotating Action.



Max Spray Dia : 3 Meters
 operating Pressure : 2 Bar
 Max Temp. : 140°C
 Coverage : 360° & Partial

Spray Angle



- Operates in every position .
- Free Spinning, Self Lubricating & Self Flushing .
- Recommended for Glass Lined Tanks .

SR	MODEL NUMBER	END CONNECTION	FLOW RATE			DIMENSIONS	
			@ BAR			DIA	LENGTH
		E	1	2	3	D	L
1	JSR-K84.050.24.3S.AL	3/4" BSP(F)	52 TO 105 LPM			60	71
2	JSR-K84.100.24.3S.AN	1" BSP(F)	52 TO 228 LPM			74	84

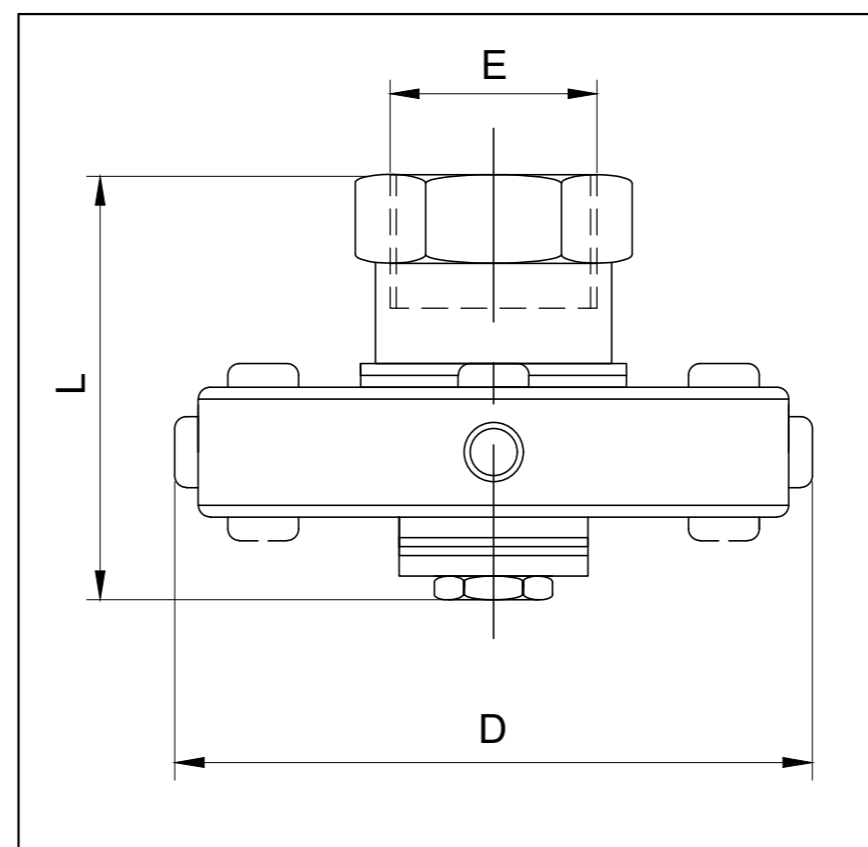
NOTE : END CONNECTIONS AND MATERIAL WILL CHANGE ON CUSTOMER REQUIREMENT



www.jsrspraynozzles.com

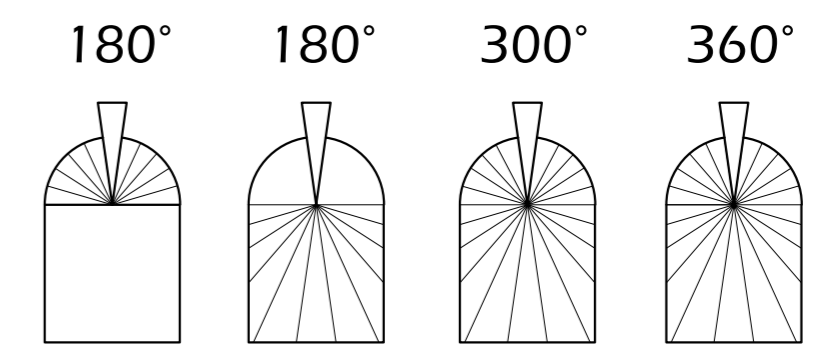
JSR MULTI JET SPRAY BALL - K76

- Material : Stainless Steel 316
- Bearing : PTFE Sliding Bearing
- High Cleaning Performance at low pressure .
- PTFE Bearing easily replaced to extend the service life .
- Free Spinning ,Self Lubricating & Self Flushing .
- Heavy Duty, High Capacity .



Max Spray Dia : 6.9 Meters
 operating Pressure : 2 Bar
 Max Temp. : 200°C
 Coverage : 360° & Partial

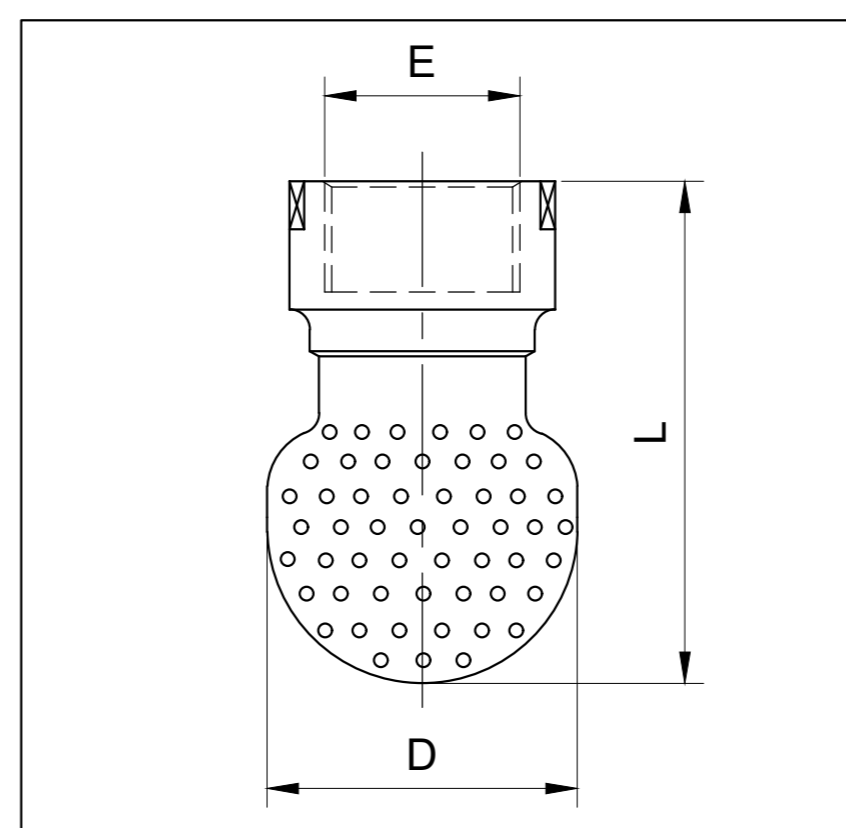
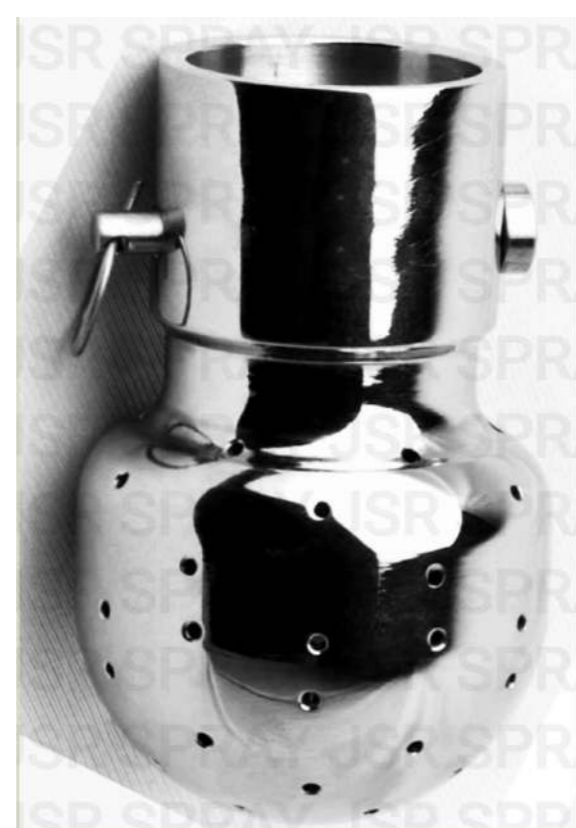
Spray Angle



SR NO.	MODEL NUMBER	END CONNECTION	FLOW RATE			DIMENSIONS	
			@ BAR			DIA	LENGTH
			1	2	3	D	L
1	JSR.K76.150.24.3A.AN	3/4" BSP(F)	152 TO 305 LPM			117	68
2	JSR.K76.300.24.3A.AW	2" BSP(F)	305 TO 602 LPM			151	97

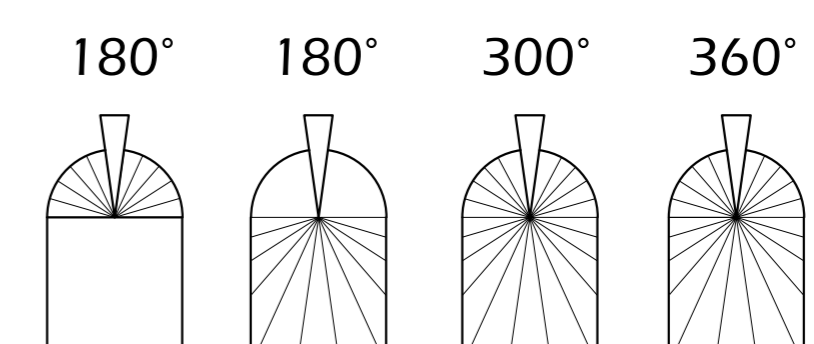
JSR STATIC SPRAY BALL - SERIES K29

- Material : Corrosion Resistant Stainless Steel AISI 316L OR TEFLON
- Very Effective Static Spray Ball.
- Sharp and Straight Solidjets, Exellent for rinsing .
- Very fine surface finish inside and outsides
- APPLICATIONS : For sanitary Environment Dairies, Pharmaceuticals processing, Food & Beverage Manufacturer & High purity chemicals.



Max Spray Dia : 3.0 Meters
 operating Pressure : 2 Bar
 Max Temp. : 200°C
 Coverage : 360° & Partial

Spray Angle

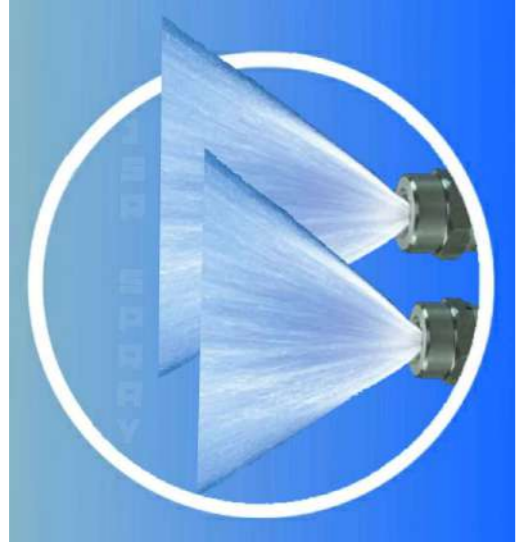


SR NO.	MODEL NUMBER	END CONNECTION	FLOW RATE			DIMENSIONS	
			@ BAR			DIA	LENGTH
			1	2	3	D	L
1	JSR.K29.050.24.3A.AL	3/4" BSP(F)	21	28	33	24	38
2	JST.K29.050.24.3A.AL	3/8" BSP(M)	23	30	35	24	43
3	JST.K29.040.24.3A.AH	1/2" BSP(F)	30	40	47	30	45
4	JST.K29.060.24.3A.AL	3/4" BSP(F)	45	60	71	42	68
5	JST.K29.060.24.3A.TF10	1" PIN TYPE	45	60	71	42	68
6	JST.K29.110.24.3A.AN	1" BSP(F)	100	110	120	54	95
7	JSR.K29.170.24.3A.TF150	1.5" PIN TYPE	129	170	200	65	116
8	JSR.K29.210.24.3A.TF200	2" PIN TYPE	160	210	250	98	150

NOTE : END CONNECTIONS AND MATERIAL WILL CHANGE ON CUSTOMER REQUIREMENT



www.jsrspraynozzles.com



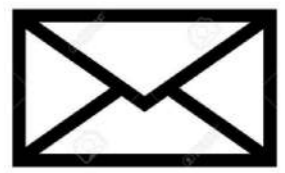
JSR SPRAY SYSTEMS (INDIA)

DESIGNERS & MFG. OF INDL. SPRAY NOZZLES, ACCESSORIES
AND SPRAY SYSTEMS

Contact



Office : +91-9029947676, 9956673835



jsrspraynozzles@gmail.com



FACTORY & OFFICE ADDRESS

Plot #512, Tulsi Gate, Kiccha road, Lalpur
(Udham singh nagar) UTTARAKHAND 263148



MSME
MICRO, SMALL & MEDIUM ENTERPRISES
सूक्ष्म, लघु एवं मध्यम उद्यम



www.jsrspraynozzles.com